

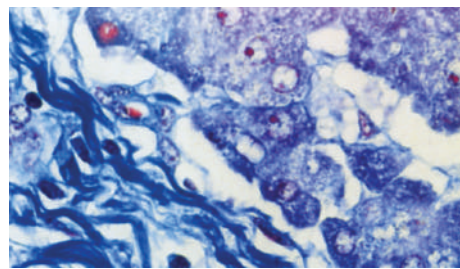
Our first priority for clinical and educational student microscopes is cost-effective performance assured of higher quality.

From top to bottom, the DN10 is built to last. It's also designed to suit the demanding environment in which it will be used, with features like a diecast aluminum stand which minimizes vibrations and provides durable and fatigue-free, stable operation. Other design features include:

Optical System

The DN10 optical system incorporates all-glass optics that provide brilliant, high-contrast imaging quality. Utilise SB or LB series optics, depending on performance and budget requirements. Fungus and mold resistant coatings protect your investment

- 1 **Viewing Head**
The DN10 series Biological Monocular Microscope is equipped with Inclined viewing head at 45° and rotatable through 360° for comfortable viewing. Upgradeable to binocular 45°, and trinocular heads for economical 35mm camera & educational CCTV systems.
- 2 **Periplan Eyepieces** multilayer coated Standard CWF 10x / 18mm FOV eyepieces optimize viewing field for easy, comfortable operation. Eyepieces available with fixed pointer and reticules for measuring and counting applications. High eyepoint eyepieces and eyeguards provide comfortable, easy viewing with or without eyeglasses. Attachable rubber eyeshields block outside stray light. Objectives providing high resolution images
- 3 **Achromats & Semi Planachromats**
The Quality of Microscope is determined by its optical components. DN10 series microscopes incorporate revolutionary optical lens design providing high resolution images with achromats. Improved field flatness & sharpness with Semi Planachromats and All objectives are parfocal and parcentered to minimize refocusing.
- 4 **Nose-Piece Objective Changer**
Smooth operating, Quadruple or quintuple nosepiece to accept four or five objectives.
- 5 **Mechanical Stage**
A precision ball-bearing Mechanism ensures the accuracy and optical alignment of the system. The Ball-Bearing mechanical stage has low position co-axial controls for smooth travel over a 75 mm (X) and 40 mm (Y) axis area with precise spring-loaded slide catcher. A 0.1mm vernier provides accurate location of the specimen area
- 6 **Condensers with left & right hand controls**
The extremely efficient, removable N.A. 1.25 Abbe condenser incorporates excellent lens design for brighter illumination levels. An accurate iris diaphragm for resolution and contrast control with blue filter attachment.



DN10
(Mirror type)

7 Illuminator (Base illumination type)
Choose from three built in light sources. One is powerful 20W halogen lamp which provides more brightness and complete, even illumination. The other is the outstanding 30W halogen lamp, which offers brilliant, extremely high resolution images. With variable light intensity control dimmer and fuse protection. Daylight blue filter provides the correct colour rendition for critical specimen evaluation. Attachable daylight Mirror. Economical 7W or 18W, 10,000 hour fluorescent lamp version provides cool, bright illumination. Easy lamp change minimizes downtime.

Illuminator (Base Mirror type)
Compact, Smart New Design easily fits in class room locker.

DN10

Redefining the Standard in Educational Microscopes

A new level of optical quality in an educational Microscope. Designed for easy, comfortable operation, versatility and durability under constant use. The Adelta Optec's DN10 has been designed with exacting attention to each and every microscope component, to create a high performance instrument unique in its class.



DN10
(Base illumination type)

Upgradation to Binocular Trinocular and Video Microscopy



Focusing movement

Ergonomically located coaxial coarse and fine focusing controls, precision gear drive eliminates stage drift problems found on lesser quality instruments, with graduation reading 2 microns per division. The movement runs in extra-wide precision ball-bearing slides. Incorporates tension adjustment and safety auto-focus stop unit.



Focusing limit control prevents objective - specimen collisions. A lever restricts stage movement to prevent collisions between the objectives and focused specimen. Only fine focus adjustments are required for specimen replacement when stage is at its upper limit.

Sturdy base

With sloping arm rests for relaxed microscopy. Low heat output for comfortable operation. Built-in blue filter to prevent loss.

Exceptional Value and Superior Performance Microscopes for Students

DN10 Specifications

Item	Specifications	DN10 SB Mono	DN10LB SM Mono	DN10 SB Bino	DN10LB SM Bino	
DN10 Microscope frame	<ul style="list-style-type: none"> • Stage movement (vertical) by coaxial coarse/fine gear driven (Ball bearing guide ways). 22 mm focusing range Tension adjustment on the right, Fine focusing knob graduated in increments of 2µm, safety auto-focus stop for upper limit focusing control • Quadruple (quintuple revolving nosepiece (fixed) • Co-axial low positioned control mechanical stage 130x130 mm with smooth ball bearing slides in X and Y movement graduated with 0.1mm vernier. • Abbe condenser N.A. 1.25 (oil immersion), with aperture iris diaphragm Vertical adjustment range: 10mm • Built-in Pre-centered 6V20W halogen illuminator base with variable light intensity control, Attachable 50mm daylight mirror • Blue filter • Dust cover 					
DN10 Microscope frame	Same as above but with (Base Mirror type) 50mm Plano-concave mirror					
Power cord						
Lamp	6V20W halogen lamp					
Objectives SB Achromat 4X	170mm tube length					
SB Achromat 10X						
36 mm parfocal distance		SB Achromat 40X, spring, oil				
Objectives LB Semi-plan SM Achromat 45mm parfocal distance	160mm tube length					
Optional Plan Achromat Objective		Plan Achromat 100X (anti-fungus) spring, oil				
Standard Eyepiece		CWF10X Periplan high eye point F.N. 18 mm, (anti-fungus) with attachable rubber eye-shields & dust cap				
Optional Eyepiece		CWF15X Periplan high eye point F.N. 15.5 mm, (anti-fungus) with attachable rubber eye-shields, dust cap & HY 6X				
Illumination System	*6V-20W halogen lamp precentered with field diaphragm					
Optional	*6V-30W halogen lamp precentered with field diaphragm					
	*7W or 18W 10,000 hour life fluorescent lamp					
Packing	Supplied in styrofoam case with dust cover and instruction manual. Packed in thick shock resistant plyboard cartons.					

Specifications and equipment are subject to change without any notice or obligation on the part of the manufacturer.



AX60

As an innovator in modern technologies adelta optec offers practical solutions for user friendly high performance system microscopes



DN10 BINO

ADELTA OPTEC

E-29, Jai Springs Road, Indl. Area, Yamuna Nagar-135001 (INDIA)
Ph: +91-171-3752738 •Fax: +91-171-3754403 •E-mail:info@adeltaoptec.com, •Website: www.adeltaoptec.com

ADELTA OPTEC®

LABORATORY MICROSCOPES

Performance



DN10

